



Learning German in Esslingen District

Information on language learning
for recently arrived adult migrants



Deutsch lernen | Englisch

Learning German

Introduction

Dear Sir or Madam,

“Education is the key to integration” – you may already have heard these or similar phrases since your arrival in Germany. And in fact, it is very important to get to know and understand the German education system with all it has to offer in terms of training, continuing education and further development in order to be able to gain a lasting foothold in Germany.

As you have just arrived in Germany, we want this pamphlet to help you learn about the important contact points and advice centres.

Integration through education only succeeds if all the relevant parties work together and know about the supporting services. With our series of publications, we want to play our part in helping to support you on your way to a self-determined and independent life in our district.

This pamphlet will inform you about “Learning German in Esslingen District.” It is intended to help you as a language learner to feel at home quickly and easily.

My heartfelt thanks go to everyone who has helped to produce the pamphlet.

Katharina Kiewel
Head of Social Services

06 **1. Classification of language levels**

06 **1.1 Language levels**

08 **1.2 Assessment test**



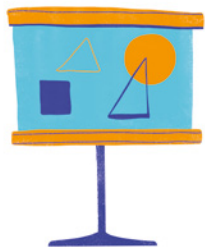
09 **2. Language courses offered in Esslingen district**

11 **2.1 Standard language courses**

- 11 ▪ FlüAG courses
- 12 ▪ Initial orientation courses
- 14 ▪ Integration courses
- 20 ▪ Professional language courses /
DeuFöV courses

24 **2.2 Additional language courses**

- 24 ▪ VwV Deutsch courses
- 26 ▪ BEF-Alpha courses
- 28 ▪ MiA COURSES
- 30 ▪ Other services for
special target groups
- 31 ▪ Diagram: Language courses offered in
Esslingen district (language learning
journey)



32 **3. Learning German independently**

33 **4. Language course providers in Esslingen district**

- 33 ▪ Esslingen
- 34 ▪ Filderstadt
- 34 ▪ Kirchheim
- 35 ▪ Leinfelden-Echterdingen
- 35 ▪ Nürtingen
- 36 ▪ Ostfildern



36 **5. Advice centres**

- 36 ▪ Agency for Work
- 37 ▪ Job Centre
- 38 ▪ Youth Migration Services
- 39 ▪ Migration advice for adult migrants
- 39 ▪ Additional advisory services
for refugees

40 **6. Useful information and contacts**

- 40 ▪ Federal Office for Migration
and Refugees
- 41 ▪ Immigration Office

1. Classification of language levels

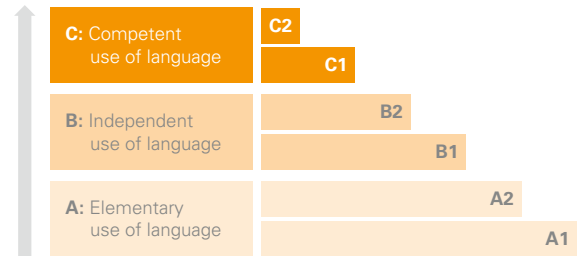
1.1 Language levels

The classification of language skills into language levels is based on the criteria of the Common European Framework of Reference (CEFR). These language levels are the same across Europe, allowing you to compare your language skills and measure your learning success.

The levels set learning objectives in the categories of listening, speaking, reading and writing in the German language. These goals should be achieved within a course. This is tested at the end of the course with an exam.



There are three basic language levels, each with two sub-levels:



Level	Description of the skills
A1	You can understand and use simple sentences in German.
A2	You know the basics of the German language and can communicate in everyday situations.
B1	You can talk about many topics in simple German and report on your own experiences.
B2	You can understand complex German texts and discuss them.
C1	You can understand difficult German texts and express a view spontaneously and fluently about all issues.
C2	You speak (almost) as well as a German native speaker and have hardly any difficulties understanding or speaking the language.



Link to website

1.2 Assessment test

In order to find a suitable language course, you can test your German language skills. Your language level is determined with an assessment **test**. This tests your reading, listening and speaking skills in German. The result of the test is then your **language level**. You can attend a literacy course before reaching a language level. This teaches you how to read and write in German.



Link to website



You can find out how good your German is with the online language test created by the Goethe Institute. Are you a beginner, advanced or already a pro? This test gives you an initial introduction, but is not recognised proof of your German knowledge.

You can find the test here:



Link to website

2. Language courses offered in Esslingen district

Language learning for recently arrived **migrant children and young people** is mostly provided in childcare facilities and in schools. Schools offer so-called preparatory classes (VKL). Young adults can attend a pre-qualification year for their work / careers (without knowledge of German) (VABO/VAB) at vocational schools. Starting in the school year 2024/25, the VAB will be replaced by a **dual** preparation course (**AVdual**). For more information, see the pamphlet entitled "A Successful Transition."

Youth integration courses are available for young adults under the age of 27 who are required by law to attend school.

There is also a range of different language courses available for adults in Esslingen district to ensure that you can pick the course that suits your personal circumstances and final goal. Courses are available on a full-time or part-time basis to allow individuals to learn German while they are in education, training or work.

All the types of courses are presented in the following sections: What target group the courses are aimed at, what you will learn on the course, where you can register and how much a course costs or who will pay for the course.



A general overview of the language courses offered in Esslingen district can be found here:



Link to website



2.1 Standard language courses

The following language courses are so-called standard courses offered by either the Federal Republic of Germany or the state of Baden-Württemberg. This means that these courses are offered on an ongoing basis and in some cases are prescribed by law.

FlüAG courses

FlüAG courses are easily accessible language courses based on the Refugee Accommodation Act (**Flüchtlingsaufnahmegesetz**) (Section 13(2)). The course is financed by the state of Baden-Württemberg.

Target group Adult asylum seekers

Format FlüAG courses are available either as literacy courses or language courses for level A1. Each course is tailored to the participants' needs.

Goal

- Initial introduction to the language
- Learn the basics of the German language
- Provides a basis for continuing to learn the language

Qualification Certificate of attendance

Organisation The district has commissioned the Workers' Welfare Association (AWO) to organise these language courses. The language courses are usually run by groups of volunteers working with refugees. The courses are mostly held in the shared accommodation. Refugees in shared accommodation can ask their social worker for more information on the course.

Costs This course is free to attend.

Initial orientation courses

Initial orientation courses are easily accessible courses designed to introduce you to the language and to teach values. They give asylum seekers important information about everyday life in Germany. The initial orientation courses are financed by the Federal Ministry of the Interior and Community. The Federal Office for Migration and Refugees takes over the planning and organisation with the course providers.



Target group ▪ People who following their arrival in the country and due to their living conditions need to attend an easily accessible introductory and orientation course, **primarily** asylum seekers.

- **If there are free spaces:** Recognised asylum seekers and their families as well as other third-country nationals with legal residence and EU migrants, if they cannot (yet) attend an integration course for legal, actual or individual reasons.
- People of mandatory school age **cannot** attend the courses.

Format The focus of the initial orientation course is to learn about everyday life and living in Germany. The course covers the following topics: Living, working, health, shopping, nursery school, customs and habits in Germany and much more. A course is made up of a total of 300 teaching units (1 teaching unit lasts 45 minutes).

- Goal** ▪ Learn the basics of the German language
- Understand the structures to help better navigate life in Germany
 - Gain knowledge and skills for everyday life in Germany and the norms and values of community in Germany

Qualification Certificate of attendance

Organisation Registration should be made with the respective course provider.

Costs This course is free to attend.



Link to website

Integration courses

The integration course is the main tool for language learning in Germany and is organised by the Federal Office for Migration and Refugees (**BAMF**). In addition to the classic integration course, there are also special formats designed for different target groups. These courses have the same structure, but differ in terms of duration and the content that they focus on. The special format courses are presented on pages 18/19 of this section.

Target group The following people can participate in an integration course:

- Asylum seekers with a temporary residence permit according to section 55(1) of the Asylum Act (AsylG)
- Foreigners with a tolerated stay permit according to section 60a(2)(3) of the Residence Act (AufenthG) in conjunction with a tolerated stay permit for the purpose of vocational training according to section 60c(1) of the Residence Act (AufenthG) or a tolerated stay permit for the purpose of employment according to section 60d(1) of the Residence Act (AufenthG)
- People with the right of residence according to section 104c of the Residence Act (AufenthG)
- Foreigners with a residence permit according to section 24 of the Residence Act (AufenthG) or section 25(5) of the Residence Act (AufenthG)
- Ethnic German resettlers
- already living in Germany for a long time Foreigners
- EU citizens
- German nationals with inadequate language skills

Format An integration course is made up of a language course and an orientation course.

A language course teaches language skills and important topics from everyday life. These include jobs and work, childcare and parenting, health and living.

The orientation course provides basic knowledge about Germany. Some of these topics include history and culture and the rights, duties and values that are important in Germany.

Goal ▪ Integration into Germany

- Learn the German language

Qualification “Deutsch-Test für Zuwanderer” (German Test for Migrants) (**DTZ**) certificate after passing the language exam, “Leben in Deutschland” (Life in Germany) (**LiD**) certificate after passing the orientation course exam

Organisation / application Information on how to apply for an integration course can be found on page 16.

Costs The costs vary depending on whether you are required or entitled to attend and whether you are granted one of the free spaces on the course. In some cases, applicants’ income must also be taken into account.

If you have specific questions about the costs or whether you can apply for an exemption from the costs, please contact the relevant language course provider. People who are claiming benefits (social assistance or asylum seeker benefits) can have their travel expenses reimbursed from a distance of three kilometres, provided that they are attending the course regularly.



Application for an integration course

Applications for the integration course can be sent digitally or by post to the BAMF.

Application forms for admission on an integration course are available in **digital** format via the Federal Portal.

The following administrative services can be applied for easily and quickly online via the Federal Portal:

- Application for admission to participate in an integration course
- Application for approval to repeat a maximum of 300 teaching hours of the language course
- Application for exemption from contributing to the costs of the integration course
- Application for a travel allowance
- Application for reimbursement of the contribution towards the costs

Interested parties and course participants can also find out in German or English about the prerequisites for taking part in the integration course and receive helpful information on applying for it.



Link to website

It is still possible to submit the applications in writing. To do so, you can fill in the corresponding PDF application form, print it out and send it to the Federal Office for Migration and Refugees by post, including any enclosures. The application forms and leaflets on submitting an application can be found on the BAMF homepage.



Link to website

Further information can be found on the BAMF website. Here you can find your relevant BAMF regional office via the BAMF NAVI tool (see page 40).

Integration course structure:



Special course formats:

Literacy course

Aimed at people who cannot read and write for a variety of reasons. Literacy courses enable you to acquire writing skills and German language skills at the same time.

Second script language course

For migrants who can write in one or more languages that do not use the Latin alphabet and are literate in these languages. The course teaches them the Latin alphabet as a basis for later language learning.

Women's integration course

The content of the course focuses heavily on topics specifically aimed at women. All women's integration courses are led by female teachers. Women with children under the age of three who do not have a place at a childcare facility can attend a special women's language course that also provides childcare. During the language course, usually in the morning, the children are cared for on-site in a room nearby by trained professionals.

Parents' integration course

Specifically focuses on topics that are important for parents of children growing up in Germany. The course lasts longer than others.

Youth integration course

Aimed at people aged 27 and under who are no longer required by law to attend school. It covers topics such as school and education, but also family and cohabitation. In addition, the participants become familiar with the regional educational institutions and practical placements as part of a practical phase.

Assisted course

Designed specifically for people who have difficulty learning a new language or need a little more time. The assisted course comprises has more teaching units than the classic integration course.

Intensive course

Covers the same content as the classic integration course, but in fewer teaching units. This is specifically designed for experienced language learners or for people who want to integrate into German society, life and the world of work particularly quickly.



[Link to website](#)

Looking for a course provider in Esslingen district is very easy thanks to the online information system BAMF NAVI:



[Link to website](#)



Professional language courses / DeuFöV courses

The Ordinance on German Language Training (**Deutschsprachförderverordnung**) (**DeuFöV**) courses represent the next module in the language learning journey and follow directly on from integration courses. The Federal Office for Migration and Refugees is responsible for coordinating and running these courses. DeuFöV courses are professional language courses and are intended to prepare people with a migrant background seeking work for the job market.



Target group

- Participants must:
- Have a migrant background and a need for further language training. This is the case with migrants from third countries, EU citizens and Germans with a migrant background.
 - Have completed an integration course and/or speak German at A1, A2, B1, B2 or C1 level. To attend a course with a target language level below B2, people are required to have already attended an integration course and not passed the German Test for Migrants.
 - Be registered for employment and/or receive unemployment benefits according to the German Social Code, either SGB II or SGB III.
 - Be looking for or already found a training position.
 - Be going through the recognition process for your professional or training qualification.

The following people can also participate in this type of course:

- People who are already employed can take part in the professional language course. The prerequisite is that they do not yet have adequate language skills to master their future everyday working life.
- People with a tolerated stay permit according to section 4(1)(2)(2) of the Ordinance on German Language Training (DeuFöV), who do not have access to the integration course, do not have to prove that they have passed the German Test for Migrants in order to participate on this course. It is generally assumed that these people need a further language qualification.
- People with the right of residence according to section 104c of the Residence Act (AufenthG)

Format ▪ Courses for people who are going through the recognition process for academic medical professions and healthcare professions.

- Courses with subject-specific content in various disciplines in the area of industrial technology and retail.
- Courses with the entry level A1 and A2 for participants of the integration course who have not achieved level B1.

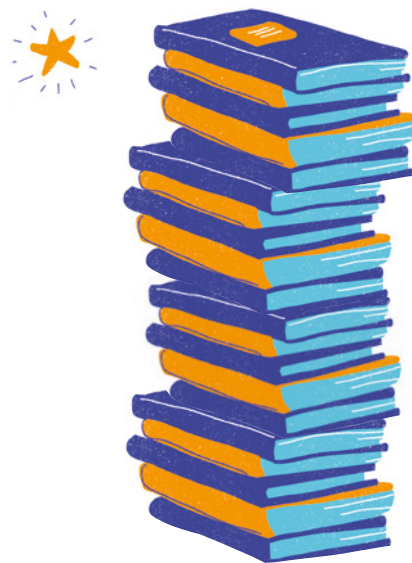
-
- Goal** ▪ Learn the German language
▪ Improve opportunities in the training and job market
-

- Qualification** Language certificate after passing the exam, certificate of attendance for special courses focusing on specific subject areas
- Become familiar with the specifics of the working world in Germany
-

Organisation The Agency for Work grants people seeking a job or training or registered unemployed people approval to attend a course. For people claiming SGBII benefits, the Job Centre grants approval to attend a course or informs claimants that participation in a course is mandatory. People who are already working or on a training programme or going through the recognition process and do not receive SGB II or SGB III benefits can apply directly to the BAMF to verify their entitlement to participate in the course.

Costs The course is generally free to attend. If an employed person's annual taxable income exceeds €20,000, they pay a contribution of €2.42 per teaching unit. This amounts to €1,452 for a course with 600 teaching units. The employer can also pay this contribution towards the costs. Upon successfully completing the exam, the participant can request a reimbursement of 50% of the contribution towards the costs.

People who are claiming benefits (social assistance or asylum seeker benefits) can have their travel expenses reimbursed from a distance of three kilometres. More detailed information can be provided by the language course provider.



Find course locations near you with the Kursnet search portal.

[Link to website](#)



Further information can be found here.

[Link to website](#)

2.2 Additional language courses

The additional language courses supplement the standard courses. Language learners can attend these courses if they want to continue their education or if they do not have access to the standard courses for particular reasons.



VwV Deutsch courses

German courses organised according to the so-called Administrative Regulation on German (Verwaltungsvorschrift Deutsch) (VwV Deutsch) are aimed at refugees and people with a migrant background. VwV Deutsch courses are funded by the Ministry for Social Affairs and Integration of the State of Baden-Württemberg and the district.

Target groups Refugees and people with a migrant background who do not (yet) have access to language courses provided by the Federal Office for Migration and Refugees.

The following people are **not** entitled to attend these courses:

- People required to attend mandatory schooling
- People required to attend a BAMF integration course
- People with a tolerated stay permit from a safe country of origin

Format The courses are available as basic courses for the language literacy level of A1 to C1. They can also be offered as special courses.

These are:

- Language courses for parents and women with childcare
- German courses in tandem with work for employed people
- Intensive language courses
- German courses run in conjunction with an initial qualification.

Additional requirements apply to people who wish to attend special format courses.

Goal

- Learn the German language
- Prepare for the job market

Qualification Language certificate after passing the exam

Organisation Anyone interested in attending should contact their social worker, the integration management team or the regional contact for local integration. The VwV Deutsch courses are run by a variety of different language course providers in Esslingen district.

Costs This course is free to attend. Travel expenses can be reimbursed from a distance of three kilometres, provided that the course is regularly attended.



Further information on the target group and course formats can be found here:



Link to website

BEF-Alpha courses

The “**B**ildungsjahr für **e**rwachsene **F**lüchtlinge” (Education Year for Adult Refugees) (**BEF-Alpha**) gives participants the vital foundations that they need to integrate and get into work in Germany. The project is funded by the Federal Ministry of Education and Research and is arranged in partnership with the state of Baden-Württemberg as part of its Education Journey Initiative.

Target group Refugees aged between 20 and 35 who have little or no knowledge of the German language, regardless of where they come from or their legal status.

Format BEF-Alpha connects language learning to practical career guidance. The course is made up of different modules: literacy and language learning, career guidance, preparing for work, everyday skills and social education/the basics of politics. BEF-Alpha courses last 35 teaching weeks and include a five-week placement. The course is also available as women’s course with childcare.

Goal ▪ Learn the German language
▪ Provides a basis for continuing to learn the
▪ Prepare for the job market

Qualification Language certificate after passing the exam

Organisation Registration for a BEF-Alpha course should be made with the respective course provider.

Costs This course is free to attend.



Link to website

MiA courses

MiA stands for “**M**igrantinnen einfach stark **im** **A**lltag” (Empowering Migrants in Everyday Life with Ease). The MiA courses are financed by the Federal Ministry of the Interior and Community.



Target group Foreign women aged 16 and over who have not yet obtained a school-leaving certificate or vocational qualification in Germany.

The women must also fall into one of the following groups:

- Foreigners with a permanent residence permit (except women from Western Europe, USA, Canada and Australia)
- Women with a tolerated stay permit for the purpose of vocational training or employment
- Asylum seekers from countries with good prospects of remaining in Germany (currently Afghanistan, Eritrea, Somalia and Syria)
- Asylum seekers who arrived in Germany before 1 August 2019, have had a temporary residence permit for at least three months, do not come from a safe country of origin and fulfil one of the requirements of section 44(4)(2)(1b) of the Residence Act (AufenthG). This means women who are working or in education, looking for work or have a child who is not required by law to attend school.

Format An MiA course lasts 34 hours, which is equivalent to around 45 teaching units (1 teaching unit lasts 45 minutes). The course content is tailored to the needs of the participants. The course leader is a woman.

- Goal**
- Initial introduction to the language
 - Help women arrive and get settled in Germany
 - Empower women in their social lives

Qualification Certificate of attendance

Organisation This is a voluntary course. Registration for an MiA course should be made with the respective course provider.

Costs This course is free to attend.



Further information on the MiA course, course locations and modules.

[Link to website](#)

Other services for special target groups

Learning German with the support of dedicated members of the local community

Many communities in the district have asylum working groups and support groups whose volunteer members teach German to refugees. You can find out from your local asylum working group whether your local area has any volunteer initiatives for helping you learn the language.

You can find more information on asylum working groups in Esslingen district here:



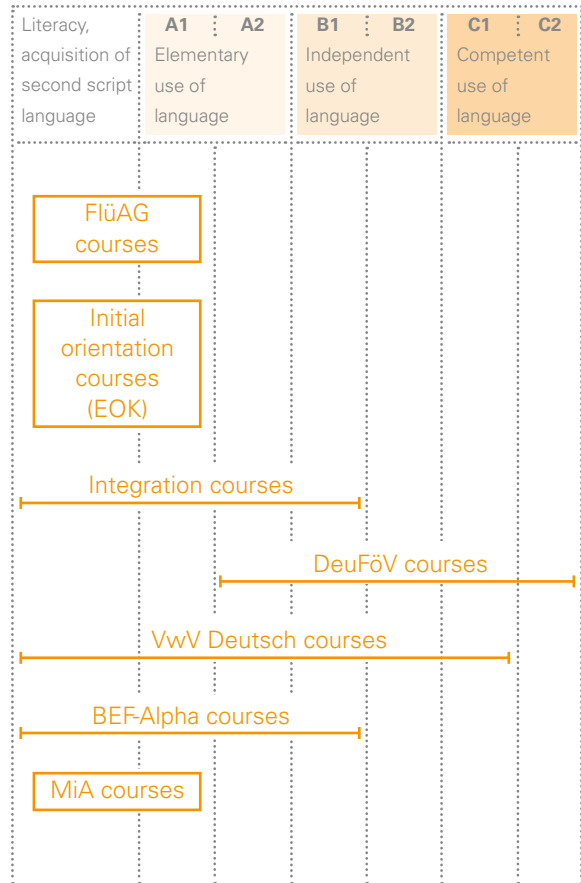
Link to website

Self-funded courses

Anyone who wants to learn German but cannot get funding to cover the costs can attend a self-funded course that they pay for themselves. These courses are available for all language levels. They are available as full-time, part-time, evening or intensive courses. For more information, please contact your nearest course provider directly. These are listed on page 33-35.



Language courses in Esslingen district (Language learning journey)



3. Learning German independently

It is not always possible to start a language course straightaway. Sometimes there are waiting times at the start or in between courses. These self-learning options are a good way to supplement your learning. One option is to learn German independently online. A collection of links with a wide range of **free** online German courses, apps and German for work can be found here:



Link zur Website

If you prefer to learn German through books, then you should look for German textbooks that provide answers to exercises so that you can test your learning yourself. Extensive learning material is available from publishers like PONS, Hueber, Klett and Cornelsen.



4. Language course providers in Esslingen district

Esslingen



**Deutsche Angestellten-Akademie
(The German Employees Academy)**

DAA Esslingen Campus

Max-Eyth Straße 7
73733 Esslingen
Tel.: +49 (0)711 / 13 77 43 50
www.daa-esslingen.de



**Didactica Sprachinstitut
(Didactica Language Institute)**

Kollwitzstraße 16
73728 Esslingen am Neckar
Phone: +49 (0)711 / 35 44 30
www.didactica-es.de/de/home-2



Vera Bildung (Vera Education)

Olgastraße 25
73728 Esslingen am Neckar
Phone: +49 (0)711 / 55 09 41 20
www.vera-bildung.de



International Bund (International Confederation)

Martinstraße 42- 44
73728 Esslingen am Neckar
Phone: +49 (0)711 / 36 54 13 36
www.internationaler-bund.de/standort/211414



**BBQ Bildung und Berufliche Qualifizierung gGmbH
(BBQ Education and Professional Qualification)**

Martinstraße 42-44
73728 Esslingen
Phone: +49 (0)711 / 31 05 740
www.biwe-bbq.de/ueber-uns/vor-ort/esslingen



Metis GmbH

Martinstraße 42
73728 Esslingen am Neckar
Phone: +49 (0)711 / 54 99 85 30 00
www.metis.gmbh



Peart Sprachschule (Peart Language School)

Pliensastraße 43
73728 Esslingen am Neckar
Phone: +49 (0)711 / 35 62 32
www.peart-sprachen.de



Volkshochschule Esslingen (Esslingen Adult Education Centre)

Mettinger Straße 125
73728 Esslingen am Neckar
Phone: +49 (0)711 / 55 02 10
www.vhs-esslingen.de

Filderstadt



Volkshochschule Filderstadt (Filderstadt Adult Education Centre)

Schulstraße 13/1
70794 Filderstadt
Phone: +49 (0)711 / 70 03-462
www.vhs-filderstadt.de

Kirchheim



Christliches Jugenddorfwerk (Christian Association of Youth Villages)

Im Doschler 36
73230 Kirchheim unter Teck
Phone: +49 (0)7021 / 72 800
www.cjd-kirchheim.de



Deutsche Angestellten-Akademie (The German Employees Academy) DAA Kirchheim Campus

Steingaustraße 23
73230 Kirchheim unter Teck
Phone: +49 (0)7021 / 80 19 90
www.daa-kirchheim.de



Volkshochschule Kirchheim (Kirchheim Adult Education Centre)

Max-Eyth-Straße 18
73230 Kirchheim unter Teck
Phone: +49 (0)7021 / 97 30 30
www.vhskirchheim.de

Leinfelden-Echterdingen



Volkshochschule Leinfelden-Echterdingen (Leinfelden-Echterdingen Adult Education Centre)

Neuer Markt 3
70771 Leinfelden-Echterdingen
Phone: +49 (0)711 / 16 00 315
www.vhs-le.de

Nürtingen



Brother's House Diakonie (House of Brothers' Deaconry)

Kirchheimer Straße 60
72622 Nürtingen
Phone: +49 (0)7022 / 21 75 119
www.migration-und-zuwanderung.bruderhausdiakonie.de/sprach-und-integrationskurse/



Deutsche Angestellten-Akademie (The German Employees Academy) DAA Nürtingen Campus

Kirchheimer Straße 60
72622 Nürtingen
Phone: +49 (0)7022 / 73 99 911
www.daa-nuertingen.de



Volkshochschule Nürtingen (Nürtingen Adult Education Centre)

Schloßgartenstraße 2
72622 Nürtingen
Phone: +49 (0)7022 / 75-330
www.vhs-nuertingen.de/index.php

Ostfildern



Volkshochschule Ostfildern (Ostfildern Adult Education Centre)

Esslinger Straße 26
73760 Ostfildern
Phone: +49 (0)711 / 34 04 800
www.vhs-ostfildern.de

5. Advice centres

If you have any questions or need information about learning German, you can contact different advice centres around Esslingen district. The advice is free and confidential.

Bundesagentur für Arbeit (Agency for Work)

Responsible for job-seekers / people registered as unemployed.

Esslingen office

Plochinger Straße 2
73730 Esslingen
Phone: 0800 / 45 55 5-00

Kirchheim office

Steingaustraße 24
73230 Kirchheim unter Teck
Phone: 0800 / 45 55 500

Nürtingen office

Europastraße 36
72622 Nürtingen
Phone: 0800 / 45 55 500

Leinfelden-Echterdingen office

Stadionstraße 4
70771 Leinfelden-Echterdingen
Phone: 0800 / 45 55 500



Link to website

The services offered by the Agency for Work can be found on Kursnet:



Link to website

Job Centre

Responsible for people receiving unemployment benefit II.

Esslingen Integration Centre for Work and Education (ISAA)

Responsible for recognised refugees receiving benefits – unemployment benefit II
Uhlandstraße 1
73734 Esslingen
Phone: 0711 / 90 65 40

Kirchheim office

Rosa-Heinzelmann-Straße 18
73230 Kirchheim unter Teck
Phone: +49 (0)7021 / 72 450

Leinfelden-Echterdingen office

Gutenbergstraße 17
70771 Leinfelden-Echterdingen
Phone: 0711 / 22 06 270

Nürtingen office

Galgenbergstraße 9
72622 Nürtingen
Phone: +49 (0)7022 / 25 210



Link to website

Youth Migration Services

The target group of the Youth Migration Services (Jugendmigrationsdienste) (JMD) is young people with a migrant background between the ages of 12 and 27 – regardless of their residence status, provided that they are residing in Germany lawfully or on the basis of a so-called tolerated stay permit under the law on foreign nationals. Their services are also aimed at the parents of children and young people with a migrant background, in particular when it comes to questions surrounding education and training for their children.

The Youth Migration Services provide advice on language learning and continuing education, amongst other things. They also offer assistance and information on questions relating to topics such as parenting, childhood and youth, the school and education system, career planning, working with computers and working with programmes for learning German.

The advice is provided on an individual basis with integration support plans, advice and support on specific cases and parental work through to group activities and courses.



An overview of the Youth Migration Services in Esslingen district can be found here:



[Link to website](#)

Migration Advice for Adult Migrants

The Migrationsberatung für erwachsene Zuwanderer (migration advice for adult migrants) (MBE) provides support to migrants aged 27 and older. Their main target group includes Ethnic German resettlers, foreigners who are residing in Germany lawfully and permanently (with a residence permit) and foreigners who are entitled to attend integration courses (without a residence permit).

The work of the MBE includes providing advice on topics such as German and integration courses, supporting language and social participation and offering an introduction to everyday life in Germany. They also teach the fundamental principles of democracy. The advice is available on a one-to-one basis or in a group setting.

An overview of the migration advice centres for adult migrants in Esslingen district can be found here:



[Link to website](#)

Additional advisory services for refugees

If you are living in shared accommodation in the district or in one of the region's half-way houses, your social workers can offer advice on where to look for a type of course or course provider to suit you. The Social Services responsible for larger cities in Esslingen district can also provide you with information on places in the region where you can learn German.



6. Useful information and contacts



Bundesamt für Migration und Flüchtlinge (Federal Office for Migration and Refugees)

The Federal Office for Migration and Refugees (**BAMF**) can help you look for places to learn German with the **BAMF NAVI tool**. With this tool, you can find information about the integration services near to where you live, such as:

- Migration advice centres
- Youth Migration Services
- Integration courses
- Course locations
- Integration projects
- Immigration Office
- Regional BAMF offices
- Regional coordinators

Using your address, the tool searches for and gives you a list of institutions near to where you live or within a specific area. You can also check the current status of the integration courses that are on offer.



Link to website

Immigration Office

If you have any questions about whether you are required or entitled to attend an integration course, contact the Immigration Office where you live.

Stadt Esslingen am Neckar (Esslingen am Neckar Municipal Authorities)

Beblingerstraße 3+1
73728 Esslingen am Neckar
Phone: +49 (0)711 / 35 12 12 22

Filderstadt

Rosenstraße 16
70794 Filderstadt-Bernhausen
Phone: +49 (0)711 / 70 03 331

Kirchheim unter Teck

Marktstraße 14
73230 Kirchheim unter Teck
Phone: +49 (0)7021 / 50 20

Leinfelden-Echterdingen

Marktstraße 12
70771 Leinfelden-Echterdingen
Phone: +49 (0)711 / 16 000

Nürtingen

Marktstraße 7
72622 Nürtingen
Phone: +49 (0)7022 / 75-259

Ostfildern

Gerhard-Koch-Straße 1
73760 Ostfildern
Phone: +49 (0)711 / 34 040

Landratsamt Esslingen (District Administration for Esslingen) (responsible for the district as a whole)

Ausländerbehörde (Immigration Office)
Am Aussichtsturm 7
73207 Plochingen
Phone: +49 (0)711 / 39 02 41 752

The following pamphlet in this series has already been published:

“A Successful Start in Esslingen District – Information for Parents with a Migrant Background”

The pamphlet “A Successful Start” provides parents with information on where to go for advice and support so that they can get settled and find their feet quickly in Esslingen district

“A Successful Transition – Information on School and Work for Recently Arrived Migrants”

The pamphlet “A Successful Transition” contains information on the range of support and services available for young people to help them get into work.



Link to website

All the pamphlets can be downloaded using the following link. The pamphlets are also available in different languages.

We cannot guarantee that the information contained in this pamphlet is complete or up-to-date.

Are you aware of any other services that you think should be included in the pamphlet or do you have any questions?

Please feel free to get in touch: integration@lra-es.de

Publisher

Landratsamt Esslingen (Esslingen District Administration)

Dezernat Soziales (Social Services Department)

SG 302 Migration and Integration

Pulverwiesen 11

73726 Esslingen am Neckar

Phone: +49 (0)711 / 39 020

Illustrations: Sarah von der Heide / Layout: Ralph Schuster



Landkreis
Esslingen